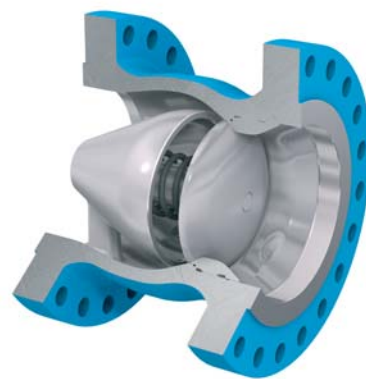
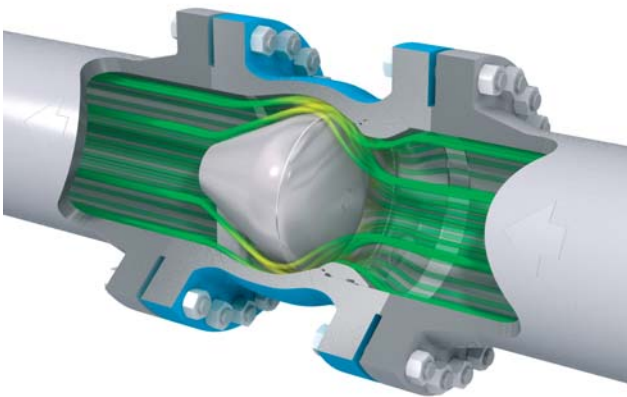


axial check valve

product summary sheet

Type designation	Check or Non-Return Valve
Model	TKZ-Y
Scope	Sizes 2" - 76" Rating ASME Class 150 - 2500 or API 3000 - 10000
Alternative to	Swing Check Valves (including controlled closure devices) Dual-Plate Check Valves Piston Check Valve
Typical applications	Critical (compressor or pump protection) Severe Duty (suitable for multi-phase flow) Low Pressure Drop Anti-Water Hammer and Buried Service



Mokveld Axial Check Valves offer the following main features:

- **Axial flow** Streamlined flow path through full-port expanded body avoids turbulence and prevents erosion and vibration. Process downtime and maintenance costs are eliminated.
- **Low pressure drop** The full opening flow passage and high-pressure recovery of the Venturi-shaped body result in very low pressure loss: reduced operating cost of pumps and compressors.
- **Easy opening** The low static pressure in the throat area is applied behind the disc and creates a pressure differential over the disc, resulting in easy opening.
- **Stability** Extremely stable during operation. The Axial Check Valve responds smoothly to changes in flow and remains stable when it is supposed to be.
- **Non-slam operation** The spring-assisted design ensures ultra-fast closing without backflow and pressure surges in critical applications such as multi-pump systems.
- **Tight shut-off** Tight shut-off is obtained by means of metal-to-metal sealing. This sealing is not affected by erosive flow.
- **Maintenance-free** Internal construction is based on the application of sound basic mechanical engineering principles. Consequently, the Axial Check Valve does not require any maintenance.
- **Special features** Custom-designed valve to meet the clients specific process conditions.
Fire-safe, cryogenic and sub-sea design.

For more detailed information, please contact Mokveld.